

THE PETROGLYPH

Newsletter of the Arizona Archaeological Society

Volume 50, Number 6

www.AzArchSoc.org

February 2014

STATE CHAIR'S MESSAGE

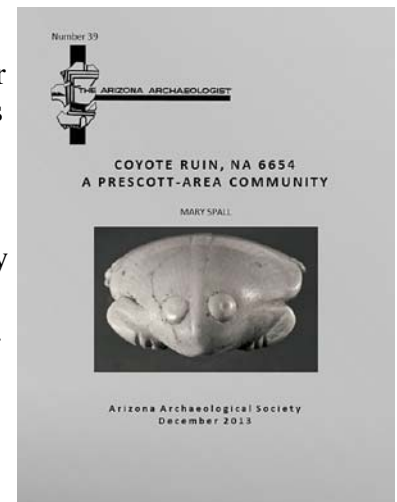
Welcome to 2014, our 50th year!

In addition to welcoming our 50th year, we also welcome the 2014 Chapter Presidents: Paulette Gehlker (Agua Fria), Ralf Kurzhals (Agave House), Mary Kearney (Desert Foothills), Karen Berggren (Acting Pres. Homolovi), Carol Farnsworth and Lynette Cross (Little Colorado River), Evelyn Billo (Actg. Pres. Northern Arizona), Wayne Walter (Rim Chapter), Chuck Jenkins (Verde Valley), Marie Britton (San Tan), Ellie Large (Phoenix) and Barbara Moebius (Yavapai).

By the time you read this, the 2014 AAS Planning Committee will have met in January to continue the restructuring of our organization in addition to formulating plans and setting goals for the year. 2014 sees something new – the inclusion of Chapter Presidents on the Planning Committee. We all are AAS and the input and involvement of each chapter is essential to ensure communication flow, to utilize the best talents of our members and to make AAS the leader in non-profit archaeology organizations (I know, big shoes to fill...) We must focus on moving forward and complying and working with today's rules and regulations pertaining to avocational archaeologists. And members, we can do this!

Number 39 of the Arizona Archaeologist publications will shortly be available for all members. Chapter Presidents will be contacting members for hard copy counts (it will also be available electronically). No. 39, Coyote Ruin, a Prescott area Community, documents the archaeological work conducted at Coyote Ruin (NA 6654), a Prescott Culture Site located NE of Prescott Valley. The field work for this project involved survey, mapping, excavation, rock art recording, followed by extensive analysis and write up of the features and artifacts. Work began in 1998 and concluded in April 2004, using volunteers from the Yavapai Chapter of AAS. This report has been long awaited and its availability is a good start to our 50th year. Kudos to the Yavapai Chapter!

--Glenda A. Simmons, State Chair



IN THIS ISSUE...

- 2 Connie Stone's Comments
- 3 2013 Financial Report
- 4 Chapter News
- 9 Fielder Fund Update
- 10 Upcoming Events
- 11 Archaeology Expo
- 11 Chapter Meeting Schedule

Next deadline is 5 pm

Wednesday, Feb. 19th

JANE KOLBER TO SPEAK AT CAVE CREEK EVENT

Friday night, Feb. 21, at 7 pm

The Desert Foothills Chapter is hosting a Special Speaker Night with well-known Rock Art specialist, Jane Kolber. She will present *Rock Art Throughout the World* in Maitland Hall at Good Shepherd of the Hills Episcopal Church, 6504 E Cave Creek Road, Cave Creek. This event is free and is open to everyone. Refreshments will be served.

(continued on page 2)

Notes for Discussion on the Role of Avocational Archaeologists (continued from January)
Connie Stone, Chair, Governor's Archaeology Advisory Commission (GAAC)

Point 3: Importance of Professional Supervision and Training Programs

- Must ensure that archaeological work is conducted under professional supervision in accordance with professional standards.
- Some non-invasive activities, such as site monitoring and rock art recording, may not require the presence of a professional at all times. However, a professional archaeologist should monitor the work and approve the project design, methods, and techniques. Records and reports need to be done to professional standards, review, and approval.
- Any decisions about archaeological resource management must be based on professional judgment and advice. Any decisions requiring compliance with historic preservation laws must be based on professional knowledge and expertise. This is necessary to meet professional and legal standards.
- Need to evaluate and improve existing training programs to ensure that certain standards are met. AAS certification programs provide a good starting point. Perhaps some training modules, such as SW prehistory, could be offered on-line.
- Seek grant funding to establish training programs. Seek examples and guidance from professional organizations such as the Society for American Archaeology. Look to other state avocational organizations for examples and lessons learned from successful programs.
- Take advantage of existing training programs, such as para-archaeology training offered by the U. S. Forest Service.
- It's appropriate that some training will continue to be accomplished through experience on projects under the guidance of professional archaeologists.
- Other opportunities for training could include participation in university field schools or in volunteer projects, such as the Passport in Time program operated by the U. S. Forest Service, or the Crow Canyon Archaeological Center.
- It may be possible to develop certification programs through community colleges. This is a more ambitious approach, but it has a model in programs developed by Arizona Bureau of Land Management (BLM) to train firefighters and natural resource technicians for future work in federal agencies.
- What about jobs on cultural resource management (CRM) projects? This may provide an opportunity for those who already have some training and experience. However, it is not a desirable venue for basic training. CRM projects must meet legal standards of compliance and typically have tight schedules. The focus is on getting the job done quickly and efficiently, which may not be conducive to effective training. Also, we want to avoid situations where companies might employ inadequately trained field crew members primarily to reduce labor costs.

Role of the GAAC

The GAAC is aware that there have been issues focused on the role of avocational archaeologists and policy matters such as the state policy regarding investigations on private land. Our role is to provide advice to the State Historic Preservation Office and to promote public education and responsible archaeological practice. We value the contributions of avocational archaeologists. The GAAC invites further communication with the AAS in reviewing, refining, and creating any relevant policies.

KOLBER TALK IN CAVE CREEK (Continued from page 1)

Jane Kolber has had a long career in the field of rock art. She has studied, recorded, lectured, and written, and has also taught many workshops on the subject. She has worked all over the world in places such as Bolivia and Italy, but has a strong focus on Chaco Canyon in New Mexico. Jane resides in Bisbee, Arizona, where she is presently busy writing after a very busy year in Chaco Canyon and Italy.

--Paddi Mozilo, Desert Foothill Chapter

Arizona Archaeological Society, Inc.

Income Statement

For the Twelve Months Ending Dec. 31, 2013

Year to Date

Revenues

Sales-Merchandise	\$	170.50
Contributions-Restricted		1,365.00
Membership Dues		15,005.00
Interest Income		19.42
Az Arch Publications		21.12
Total Revenues		<u>16,581.04</u>
Gross Profit		<u>16,581.04</u>

Expenses

Accounting Fees		350.00
Bank Charges		26.13
Storage Locker/Archives		2,877.18
Post Office Box Rental		54.00
Corporation Annual Fee		10.00
Insurance/Liability		1,718.00
Insurance/D & O		896.00
PayPal Charges		36.83
Website/Wild Apricot		1,080.00
Website Expenses		178.95
Chapter Incentive Programs		712.43
Association Dues		200.00
Outreach Expenses		772.36
Educational/Bookmark Awards		150.00
Professional Association Dues		30.00
Professional Arch Award		759.00
Petroglyph Printing		3,402.45
Petroglyph Postage/Supplies		937.37
Techsoup Software		79.90
Chapter Hosting State Meeting		1,000.00
State Meeting/Registrations		280.00
State Meetings/Speaker		566.14
State Meetings/Supplies		70.40
Historical Archive Expenses		210.32
Home Office Supplies/Treasurer		46.00
Membership Supplies		<u>109.18</u>
Total Expenses		<u>16,552.64</u>
Net Income	\$	<u>28.40</u>

Arizona Archaeological Society, Inc.

Balance Sheet

December 31, 2013

ASSETS

Current Assets		
Regular Checking Account	\$19,858.12	
Publication Fund	23,459.56	
Site Steward Funds	216.55	
Cash-Restricted Fund	4,341.41	
Fielder Fund	<u>41,242.86</u>	
Total Current Assets		<u>89,118.50</u>

Total Assets \$89,118.50

LIABILITIES AND CAPITAL

Total Liabilities 0.00

Capital		
Retained Earnings	\$89,090.10	
Net Income	<u>28.40</u>	

Total Capital 89,118.50

Total Liabilities & Capital \$89,118.50

**AAS 2013
Final Financial Report**

The AAS Income Statement for the year ending Dec. 31, 2013 and the Balance Sheet as of Dec. 31, 2013 are presented here per the State Bylaws, Section 8-E, which require that a Final Financial Report for the year be published in the Petroglyph and on the webpage as soon as available.

--Trudy Mertens, State Treasurer

**CELEBRATING THE SONORAN DESERT: A TRI-NATIONAL SYMPOSIUM
TO BE HELD IN AJO, ARIZONA, MARCH 18 - 24**

The symposium will focus on cultural and natural resource issues, Native American tribal perspectives, environmental concerns, and border issues. A variety of special field trips are planned, several to archaeological sites near Ajo. Go to their website at www.sonoransymposium.com to download a brochure or to register.

CHAPTER NEWS



Agua Fria Chapter

Jan. 13th Meeting: Mark Hackbarth from Logan Simpson Design gave a talk on the First Phoenix Cemetery and much more. We learned about pioneer burial customs and how the present city grew by exponentially, as the railroad expanded. We also learned of the extensive Hohokam sites located through out the downtown corridor and the excavations going on in those areas.

Upcoming Events:

- Feb. 9 Chapter members Deb Danowski and Paul Goltz will lead us on a hike in the Robbins Butte Wildlife Refuge. The Butte has many petroglyphs and the area itself will be teeming with migrating birds.
- Feb. 22 Chapter member Vince Waldron will lead us on a tour of South Mountain petroglyph sites. We will see less well know sites in the area with permission of the rangers
- March 15 The Picacho Petroglyph tour with Steve Ross is back on!

Classes:

Saturdays, Jan. 25, Feb. 1 & 8 - Maurice Shoger will teach a seminar on the less well-known prehistoric people of the Southwest. The classes will run from 9 am to Noon at Maurice's home in Phoenix at 4125 W. Vista. The charge is \$30 for all three sessions. Please pay at the first class and don't forget to bring a lunch. To register for the classes please contact Paulette Gehlker at paulette@magicmeow.biz.

The Agua Fria Chapter meets the second Monday of each month at 7 pm at the Universal Universalist Church located on the NW corner of 59th Ave and Cholla.

--Lori Hines

Desert Foothills Chapter



January Meeting: Our featured speakers were Eric Polingyouma and Lance Polingyouma. Eric is responsible for carrying on Hopi oral histories and an evolving migration story as director of the Hopi Migration Project. Eric spent a large portion of his life examining and discovering migration paths from areas near or around Guatemala and Oaxaca, which often entails seeking shared symbolic traditions or possible Hopi clan symbols. He demonstrated several migration paths into what is now the United States, one as far east as the Midwest. Lance is the project recorder for the Hopi Migration Project and one of his tasks is translating oral histories into a more tangible format. The turnout was overwhelming, taxing our ability to find enough space and chairs. We also gained 6 new memberships and perhaps, a few more thinking about it.

Special Event: March 1st: Desert Foothills Chapter and Cave Creek Museum cosponsor the annual **Spur Cross Archaeology Expo**. The Spur Cross Ranch Conservation Area event in Cave Creek is open from 9 am -3 pm for the public to learn about the area's archaeology through hikes, booths, gold panning, and other live demonstrations. The event is free but non Cave Creek residents must pay a \$3 park entry fee, excluding children under 16 and those with Maricopa County Park or Spur Cross passes. Confirmed booths are: Desert Foothills Chapter, Cave Creek Museum, Desert Awareness Group, Desert Foothills Land Trust, and Animal Health Services. Gold-panning will be demonstrated by the Cave Creek Museum Stamp Mill Team; pottery-making will be demonstrated by Glen Dotson; and flint knapping will also be demonstrated. Tonto archaeologist Scott Wood will be a speaker. There are children's activities and crafts, as well as the ability to handle prehistoric artifacts. Hikes (of varying degrees of difficulty) are scheduled throughout the day; some of these include archaeological sites within Spur Cross. All hikers should know their limits and prepare for desert walking/hiking with appropriate footwear and supplies. Bring the entire family and begin the celebration of Arizona Archaeology Month at Spur Cross Ranch in Cave Creek. PLEASE check the Arizona Archaeology Society (AAS) website, www.azarchsoc.org, under "events" for the final schedule of speakers and hikes.

(Continued on page 5)

....More CHAPTER NEWS....

(Continued from page 4)

Bonus Speaker: An Evening with Jane Kolber on Friday, Feb. 21 from 7 to 9:30 pm. Jane Kolber, a renowned Rock Art recorder and researcher, presents *Rock Art Throughout the World*. The meeting is at no charge to the general public and other AAS chapters are encouraged to visit. The location is in the community room of the Good Shepard of the Hills Episcopal Church, 6502 E. Cave Creek Road, Cave Creek, AZ 85331 (near Dairy Queen).

February Meeting: Join us for an introduction into the fascinating history of the Grand Canyon and river-running. This is a great opportunity for enhanced knowledge in the Grand Canyon State of Arizona. Todd Weber is a Living History presenter and educational guide. His specialties are patriots, explorers, and great adventures that occur in American history. *The History of River Runners of the Grand Canyon* is a stimulating PowerPoint presentation as Todd takes us on a journey along a historical timeline. One Hopi creation story says the Grand Canyon is a sipapu where the Hopi people emerged into the Fourth World. From this beginning, Todd's presentation takes us through to the river-runners of today. Historically, another aspect of his presentation includes the John Wesley Powell expedition, ambitions of industrialists, and the Hyde's (newlyweds) disappearance. Todd uncovers the centuries of history within this majestic canyon. The Feb. 8th meeting is at 7 pm in the community room of the Good Shepard of the Hills Episcopal Church, 6502 E. Cave Creek Road, Cave Creek, AZ 85331 (near Dairy Queen).

Reminder: Many thanks to our members submitting their membership renewals for 2014. For those that have not accomplished this task, would you please do so ASAP? You will no longer receive The Petroglyph after February and are no longer considered a DFC member. You must be an active member to participate in hikes, classes, or other activities.

Classes and Workshops: Mary Kearney is the primary contact for classes and workshops; contact her at maryk92@aol.com to sign up or for more information. Please remember that classes and workshops are open to AAS members only and DFC members have priority.

Archaeology Method I Surveying - This is a continuation of the recent Basic Surveying class. The plan also includes subsequent classes to this one. Lecture classes are at the Cave Creek Museum on Thursday, Feb. 6th and 13th from 6 to 8:30 pm. A field surveying trip is scheduled for Friday, Feb. 14th from 9 am to 2 pm (approximately). The cost is \$50 per AAS member and the facilitator is Dr. Doss Powell.

Rock Art Workshop - This workshop demonstrates filling out the "boulder attachment" form, mapping and photographing rock art, drawing panels/glyphs to scale, and filling out forms. Although this is not a certification class for Rock Art recording, it will provide a better understanding of the process and the ability to practice techniques necessary for certification by an AAS Certified Instructor. The class is on Wednesday, April 2nd from 9 to 11 am at the Cave Creek Museum, followed by field work at Spur Cross Ranch from 12 to 2 pm (the ending time is an approximation). The facilitators are Linda Dorsey, Sandy Haddock, and Chris Reed. The cost is \$15 per AAS member. Please note: non-Cave Creek residents must pay a \$3 Spur Cross Ranch park entry fee, excluding those with Maricopa County Park or Spur Cross passes.

--Roger Kearney

Little Colorado River Chapter

December meeting: We had a great year-end Christmas Party at the home of Linda Schuster. During the meeting portion we learned that Casa Malpais is in the process of putting together a "Virtual Tour" of the Prehistoric Casa Malpais Pueblo in Springerville. This will be a great addition to what they already offer and will accommodate those visitors that are unable to make the walk to the actual site. We held the drawing for the Petroglyph lap-quilt which was pieced and donated by this writer; our Hostess Linda Schuster was the recipient.



(Continued on page 6)

....More CHAPTER NEWS....

The 2014 Officers are: President, Lynette Cross; President, Sheri Anderson; Secretary, Billye Wilda; Treasurer, Ann Wilkinson. We are now in the New Year and so much is being planned for our education, entertainment and adventuresome side!

Carol Buseman and Linda Schuster, our program/excursion planners, have some exciting plans in the making for us this year. Starting with an awesome lecture and presentation on Jan. 20th by Carol Farnsworth on Uzbekistan and the Silk Road. She captured everyone's attention with the history timeline, maps, photos of the area, and yes, photos of archaeological artifacts.

February Meeting: Our Feb. 17th meeting will include a lecture by a local resident, Roxanne Knight, on *The Volcanic fields in the Springerville area and underground Hot Springs sites*. Hikes will be planned, when weather permits, for a closer look of the volcanic fields.

March is Archaeology Month. Greg Cross, Director of the Casa Malpais Museum and Archaeological Park, has arranged for speakers on the first four Saturdays of March. All lectures will be from 1 to 3 pm and include the following:

March 1: *Local Area Petroglyphs Slide Show* by Marc Zebell

March 8: *Lecture and Virtual Tour of Chaco Canyon* by Doug Gann

March 15: Lecture, *The Lost Century* by Matt Peeples

March 22: Lecture, *Set is Stone But Not in Meaning: Southwest Indian Rock Art* by Allen Dart

We are very excited to have these presentations and invite you to join us in the White Mountains to take advantage of these free lectures and, if weather permits, take a guided tour of the Prehistoric Casa Malpais Pueblo. Call 928-333-5375 for more information.

Our regular meetings are held on the 3rd Monday of each month in the Udall Room of the Springerville Town Hall complex. The business meeting is at 6:30 pm and our speaker/presentation is at 7 pm. You may contact Lynette Cross for more information at (928)551-4119 or leapday52@yahoo.com

--Billye Wilda



Phoenix Chapter

January Meeting: On Jan. 16th Dr. Charles F. Merbs, Prof. Emeritus of Anthropology, explained *What Our Skeleton Can Tell Us About What We Did In Life*. He explained how forensic anthropologists can tell, from evidence left on our bones, how we used (or abused) our bodies and in some cases, even whether we were left-handed or right-handed.

February Meeting: The speaker for our Feb. 13th meeting will be Dr. Nancy Serwint, Associate Professor of Art History in the ASU Herberger Institute School of Art. Her topic is *City of Gold: Archaeological Excavations at Ancient Marion and Arsinoe*. She is also the Assistant Director of Princeton University's excavations on Cyprus, where she has worked for 26 years. She will share some of the stories behind the artifacts from these two ancient cities as well as some vignettes about her archaeological life.

Upcoming Meetings:

March 13 Evelyn Billo, Robert Mark and Donald E. Weaver, Jr. – *Sears Point Rock Art and Beyond, Synopsis of the 2008-2012 Recording Project*

April 10 Eric Klucas, Statistical Research, *Identifying Nested Social Groups: The Pioneer Period in the Tucson Basin*.

May 8 George Cowgill, ASU, *Teotihuacan: Researching Ancient City Life in Central Mexico*.

(Continued from page 6)

....More CHAPTER NEWS....

Recent and Upcoming Hikes/Tours:

Feb/March San Tan Mountain Regional Park Petroglyph Hike with San Tan Chapter with Park Ranger Sarah Steele. The date will be announced at the February meeting and in our chapter newsletter.

April/May Visit to the ASU Anthropology Museum's exhibit on Teotihuacan City Life: Experiencing the World of Teotihuacan, which closes May 16.

Upcoming Class:

March 22 - The Phoenix Chapter is sponsoring a free 1-day Introduction to Southwestern Archaeology for new or prospective members. The class will be held in the Pueblo Grande Museum Community Room from 9 am to 4:15 pm. Class members will need to bring their own lunches.

Renewals: Memberships for 2013 expired on Dec. 31st. Members can renew at the February meeting or by sending a check along with a membership form to AAS, Phoenix Chapter, c/o Bob Unferth, Treasurer, 2255 E. State Avenue, Phoenix, AZ 85020. Membership forms will be available at the February meeting and are available to download from the Phoenix Chapter web page at AzArchSoc.org. Dues are \$35 for individuals and \$40 for families. Members who don't renew by mid-February will not receive the March Petroglyph.

The Phoenix Chapter meets at 7 pm on the 2nd Thursday of each month in the Community Room at the Pueblo Grande Museum, 4619 E. Washington St., Phoenix. We take the speaker to dinner at 5:30 pm at the Ruby Tuesday Restaurant on 44th Street and Washington just northwest of the museum. If you are interested in having dinner with the speaker, please call or email Marie (480-827-8070 or mbrit@cox.net) so that she can reserve a large enough table.

--Ellie Large



Rim Country Chapter

Feb. 15th Meeting: Our featured speaker is Jerry Snow of the Arizona Humanities Council's Road Scholar programs. Jerry's presentation is The Padre Canyon Incident of 1899; A First Hand Account By William Johnston. This living history program is an amazing true story of violence, courage, and justice. The meeting is at 10 am in the Fellowship Hall of The Church of the Holy Nativity, 1414 Easy Street, Payson.

Preview: In March the RCC will be celebrating Arizona Archaeology Month with a ***Native American Potluck Luncheon***. Those attending are invited to bring their favorite Native American dish. The festivities will include a display of artifacts from local archaeology sites, authentic Kachinas from the extensive private collection of Ed Spicer, a 50/50 raffle, and guest speaker, Harvey Leake. Harvey is a well-known guide and historian for the Four Corners area. A tour of nearby Risser Ruins will be conducted in the afternoon. The fun begins at 10 am on Saturday, March 15th. Guests are welcome.

Reminder: Membership renewals for 2014 are already due, but it is possible to renew until approximately mid-February, after which you no longer receive The Petroglyph and are no longer a RCC member. You must be an active member to participate in hikes, field trips, or other activities.

Feb. 1st Field Trip: If you hurry, you won't miss it! We' going on a field trip to the ASU Marston Exploration Theater. Archaeologist Ric Alling, ASU School of Earth and Space Exploration, will be hosting a multimedia presentation. If you wish to be included, contact Ed Spicer, RCC Activities Coordinator, ASAP.

--Wayne Walter



San Tan Chapter

January meeting: The January meeting was the chapter's best-attended meeting yet! Our chapter is growing

(Continued from page 7)

....More CHAPTER NEWS....

slowly, with people interested in the archaeology of the Southwest. Twenty-two people listened to the talk and asked many interesting questions of our speaker, Kate Spielmann, Ph.D., ASU, who explained why there was a migration to the Perry Mesa area in the late AD 1200's. Prior to AD 1275 there was a small dispersed occupation, but because the area was better watered and had good, abundant arable land, and was defensible, it was a desirable location when other parts of the southwest were in drought conditions. Dr. Spielmann suggests that the ceremonial racetrack system and an interactive social trade system across the mesa helped integrate the new neighbors in a process called ethnogenesis, or culture-making.

February: Join us in February for a special presentation by Sarah Steele, San Tan Mountain Regional Park. The community surrounding the park is growing. With growth comes many challenges to protecting and preserving our natural and cultural resources. The discussion will include how best to protect the resources, educational and archaeological research opportunities. She plans to dive deep into the extensive park history and will take a close look at the Hohokam presence within the San Tan Mountains. Finally, she will discuss why the park is at a critical point and how we can help them. Sarah Steele is a born and raised Arizona native who possesses a huge passion for the outdoors. She holds a bachelor's degree in Biology with an emphasis in Ecology and Wildlife Management. In the past 15 years she has devoted her herself to University research, husbandry within a zoological setting, wildlife management with Arizona Game and Fish and as an Interpretive Ranger for the Maricopa County Parks and Recreation Department. Currently she is the Park Supervisor for San Tan Mountain Regional Park.

Field Trip: We are planning a field trip into the San Tan Regional Park to take a look at some of the prehistoric and historical sites located in the park. Find out more details on our AAS webpage. Contact Marie Britton (mbrit@cox.net) if you are interested in joining us for this activity

Meetings are held at the San Tan Historical Society building, 20425 S Old Ellsworth Rd, Queen Creek on the second Wednesday of each month from September to May. The presentation begins at 7:30 pm. For more information on our group, contact Marie Britton at 480-827-8070 mbrit@cox.net or Earla Cochran at 489-655-6733.

-Marie Britton



Verde Valley Chapter

Hopi Ancient Trails And Cultural Landscapes: Our February meeting will be held on the 27th at the Sedona Public Library, 3250 White Bear Road, Sedona, at 7 pm. Our speaker will be Micah Loma'omvaya, Chief of Staff, Office of the Tribal Chairman of the Hopi Tribe, and also a consulting anthropologist. Micah is a Hopi tribal member of the Bear Clan from Shungopavi Village on Second Mesa. Micah has worked in the field of anthropology for over 20 years, and earned a B. A. degree in Anthropology from the University of Arizona in 1997. His presentation is entitled ***Hopi Ponawit: Along Ancient Trails and the Cultural Landscape of the Hopi People.***

The officers for 2014 are as follows: Pres., Chuck Jenkins; V.P., Scott Newth; Treas., Dr. Ron Krug; Sec., Scott Newth; 3-yr. Dir., Jerry Walters; 2-yr. Dir., Henry Zimmerman; 1-yr. Dir., Jack Edwards; Certification Rep., Jerry Ehrhardt.

Upcoming Workshops:

Feb. 1st: ***Primitive Pigments Workshop*** - Al Cornell. From 9 am to 1 pm in the Red Rock District Ranger Station, South Conference Room. The workshop will consist of a presentation about the prehistory of pigments, then about the pigments themselves – what they consist of. Then participants will get into how pigments are transformed into paints - the use of binders (vehicles). Then they will make yucca paint brushes and apply pigments to various types of surfaces. This class is free to Chapter members, but space is limited. Contact Scott Newth at rsnewth@msn.com.

(Continued on page 9)

(Continued from page 8)

....More CHAPTER NEWS....

Feb. 5th: **Projectile Point Workshop** - Ron Krug. From 8 am to 1 pm in the Sedona Public Library Community Room. The workshop will cover projectile point identification, the materials used, the respective time frames in which they were manufactured, and the cultures that created them. The class fee is \$5 to cover the cost of the room custodial charge. Space is limited. Contact Scott Newth at rsnewth@msn.com.

Opportunity of a Lifetime: The Chapter now has new high-quality ball caps, featuring our Chapter logo, the eye-catching Wampus Kitty. They will be available at each meeting for purchase for only \$15. See Scott Newth. Support your club and look interesting at the same time!

Upcoming Fieldtrip: Jerry Walters. When: Saturday, Feb. 15, from 9:00 to 2:00 p.m. Where: Walker Basin sites and rock art panels. Hike is 4.5 miles, with a fairly steep 90 ft. ascent/descent to/from the main ruin site. This short part of the hike is difficult, though with good footing. Hiking poles are recommended. High clearance vehicles are recommended.

Just a reminder: To participate in Chapter activities you must be a Chapter member. For more information, please contact Chuck Jenkins at cjenkins@npgcable.com.

--Louise Fitzgerald



Yavapai Chapter

January Meeting: About 40 members enjoyed a very informative presentation by Wendy Hodgson of the Desert Botanical Garden about the cultivation and use of agave by prehistoric peoples in the southwest. Of special interest were insights into what we can learn about contact and trade among these groups from the "agave record" they left behind.

Field Trips: Chapter members and guests visited the pit houses at Willow Lake Park in Prescott to learn about the site and how it fits in with the extensive collection of sites in the Prescott area. These are the same pit houses Yavapai members have been redefining after the site's excavation about a decade ago. Contact Fred Kraps at fkraps@mac.com for details.

Members will also be eligible to participate in an overnight field trip to two major sites in south-central Arizona next month. On Feb. 8 and 9, we'll visit the Sears Kay Ruin north of Cave Creek and the upper cliff dwelling at Tonto National Monument. Both visits will be led by experts knowledgeable about the sites.

February Meeting: The Yavapai Chapter meeting on Feb. 20th will feature Peter Pilles, chief archaeologist for Coconino National Forest, covering tips for identifying Yavapai culture sites. As always, we'll meet at the Smoki Museum Pueblo Room at 7 pm.

--Bill Burkett



Fielder Fund: Your Chance to Endow AAS Publications

The Fielder Fund was created by the Society in 1996 to inform the public about American Southwest history, archaeology, and anthropology through the support of publications and other media. The goal is to build a fund large enough that its annual interest can pay for publication of *The Arizona Archaeologist* and other publications. The name honors the Society's first publications team, Marje and Herb Fielder.

Thanks to William Henry for his \$50 monthly donation to the Fielder Fund. Balance: \$41,288.34

For more information, or to contribute, contact our AAS treasurer: Trudy Mertens, P. O. Box 819, Wickenburg, AZ 58358. Please include your chapter affiliation.

UPCOMING EVENTS

GUIDE TO ABBREVIATIONS

AAHS	Arizona Archaeological and Historical Society. Meets in Duval Auditorium, Univ. Medical Center, 1501 N. Campbell Avenue, north of Speedway, www.az-arch-and-hist.org .
AIA	Archaeological Institute of America; Chapters at both ASU and UA.
AMNH	Arizona Museum of Natural History, 53 N. Macdonald, Mesa; www.azmnh.org .
ASM	Arizona State Museum, 1013 E. University Boulevard, Tucson; www.statemuseum.arizona.edu .
ASW	Archaeology Southwest, Tucson, www.archaeologysouthwest.org , 520-882-6946
OPAC	Old Pueblo Archaeology Center, 2201 W. 44th Street, Tucson; 520-798-1201, www.oldpueblo.org .
PGM	Pueblo Grande Museum, 4619 E. Washington St., Phoenix; 602-495-0901, www.pueblogrande.com .
PGMA	Pueblo Grande Museum Auxiliary, www.pueblogrande.org .

Feb. 4, 6 - 8:30 pm, ASW, Tucson, Archaeology Café: **Rio Nuevo Archaeology**. Archaeologists from Desert Archaeology, Inc. will explore what they have learned about Tucson's history from archaeology projects in the Rio Nuevo district. At Casa Vicente, 375 S. Stone Avenue, Tucson. Gather after 5 pm, talk begins by 6:15 pm.

Feb. 5, 7:30 pm, PGMA, Phoenix, Lecture: **The Ancient and Modern Maya of Guatemala and Honduras** by Todd Bostwick, PhD, Verde Valley Archaeology Center & PaleoWest Archaeology.

Feb. 8, 10 am, ASM, Tucson, Exhibit Opening: **From Above: Images of a Storied Land**. Features pilot Adriel Heisey's aerial photographs of historic landscapes and archaeological sites. Runs through Sept. 20, 2014.

Feb. 8, 10 am - 3 pm, DVRAC, Phoenix, Festival: **Native Now Festival**. Free. Includes music, performance, short film screenings by Arizona filmmakers, indigenous foods, community art projects and activities for the whole family.

Feb. 11, 530 pm, AIA, Tucson, Talk: **Illuminating the Dark Ages in Greek Archaeology and History** by Dr. Irene Lemos, Professor of Classics at Oxford Univ. UA, Haury Anthropology Building, Room 216.

Feb. 12 & 26, 2-2:30 pm, PGM, Phoenix, Tour: **Behind the Scenes Tour** of the museum with Curator of Collections Holly Young. Learn about the artifacts that are not on display in the museum and see how museums care for their collections. Space is limited. Please sign up at the front desk to reserve your spot.

Feb. 13, 7:30 pm, AIA, Tempe, Talk: **Towards a Geometric Perfection: The Arts and Crafts of Early Greece** by Dr. Irene Lemos, Professor of Classics at Oxford Univ. ASU Tempe Campus, BA 116.

Feb. 8, 8-11 am, PGM, Phoenix, **Petroglyph Discovery Hike #99316**: An experienced Pueblo Grande Museum guide will lead participants on a 3-mile, 3-hour interpretive hike to Box Canyon/Holbert Trail in South Mountain Park. Easy. Register by Feb. 6. Cost: \$8; Age 12 and up. For details go to the PGM website.

Feb. 17, 6:30 pm, AAHS, Tucson, Talk: **Households, Community, and Social Power at the Harris Site, Mimbres Valley, New Mexico** by Dr. Barbara Roth, Prof., UNLV.

Feb. 18, 5:30-7 pm, ASW, Phoenix, Archaeology Café: **An Evening with Katherine Spielmann**. Dr. Spielmann will speak on two fascinating topics: **Is Agave an Artifact?** and **Making Culture on Perry Mesa**.

Feb. 20, 6-8:30 pm, OPAC, Tucson, Dinner & Talk: **Carbon 14 Dating, from the Earliest Dog to the World's Most Mysterious Manuscript** with Professor Greg Hodgins at Amber Restaurant & Gallery, Tucson. Reservations due by 5 pm, Feb. 19.

Feb. 22-23, 7 pm, ASM, Tucson, Fair: **Southwest Indian Art Fair** featuring Santa Clara artist Jody Folwell. 200 native artists, performances, demonstrations, auctions, native food. On front lawn of Arizona State Museum.

Feb. 28, 10 - 11 am, PGM, Phoenix, Tour: **The Park of Four Waters Tour** takes you on a tour through undeveloped, natural desert to the ruins of some of the Hohokam canal systems. This is a first come, first serve tour. Space is limited. Please sign up at the front desk to reserve your spot. General admission prices apply.

March 15 - 16, PGMA, Phoenix, Tour: **All About Spirits: Arizona Ghost Towns and Sonoita Wineries** led by Kurt Werner, the photographer responsible for the Ghost Town Exhibit in PGM's changing gallery. Reservation deadline Feb. 7. See their website for details and pricing.

2014 Archaeology Expo at Catalina State Park, Saturday, March 29, 2014, 9 am – 4 pm

This year's Expo will offer many educational attractions for archaeology and history buffs. The Expo is open to the public and is FREE. Arizona State Parks is hosting the event. The Expo provides a special opportunity for visitors to learn more about why it is important to preserve archaeological sites and historic places, what archaeologists, historians, and tribal members do in their jobs, and about the prehistory and history of Arizona. The Expo will feature archaeology-related hands-on activities, craft demonstrations, and other fun and educational events.

Tours of local archaeological sites (rock art and pueblos) will be offered and free prize raffles will occur throughout the day. The Expo will give visitors new insights into Arizona's many prehistoric, historic, and contemporary cultures, and will help instill a sense of stewardship for our state's fragile and nonrenewable heritage resources. For more detailed information, contact Kris Dobschuetz, SHPO Archaeological Compliance Specialist at Arizona State Parks/SHPO (602-542-7141) or by e-mail at kdobschuetz@azstateparks.gov.

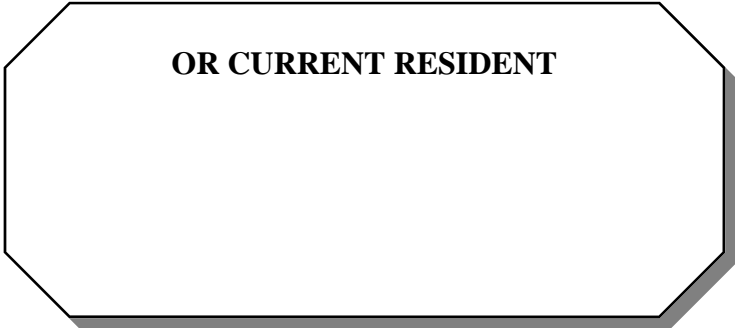
CHAPTER MEETING SCHEDULE

<u>Chapter</u>	<u>Location</u>	<u>Date & Time</u>	<u>Membership</u>
Agave House	Black Mesa Ranger Station Conf. Rm. 2748 Hwy. 260, Overgaard	4 th Wed., 6:30 pm	Gloria Kurzhals 928-536-3056
Agua Fria	West Valley Unitarian Universalist Church 5904 W. Cholla St. , Glendale	2 nd Mon., 7 pm Sept. thru May	Chris Reed 623-561-9161
Desert Foothills	The Good Shepherd of the Hills Community Building, 6502 E Cave Creek Rd., Cave Creek	2 nd Wed., 7 pm Sept. thru May	Glenda Simmons 928-684-3251
Homolovi	Winslow Chamber of Commerce 523 W. 2nd Street, Winslow	3 rd Thurs., 7 pm	Karen Berggren 928-607-1836
Little Colorado River	Casa Museum, 418 East Main Springerville	3 rd Mon., 7 pm	Sheri Anderson 928-536-2375
Northern Arizona	The Peaks "Alpine Room" 3150 N. Winding Brook Road Flagstaff	3 rd Tues., 7 pm Sept. thru Nov., Jan. thru June	Peggy Taylor 928-526-8963
Phoenix	Pueblo Grande Museum 4619 E. Washington, Phoenix	2 nd Thurs., 7 pm Sept. thru May	Bob Unferth 602-371-1165
Rim Country	Church of the Holy Nativity, The Cottage 1414 North Easy Street, Payson	3 rd Sat., 10 am	Carolyn Walter 928-474-4419
San Tan	San Tan Historical Society Museum Ellsworth & Queen Creek Roads Queen Creek	2 nd Wed., 7:30 pm Sept. thru May	Marie Britton 480-827-8070
Verde Valley	Sedona Public Library 3250 White Bear Road Sedona	4 th Thurs., 7 pm, Sept. thru May 3 rd Thurs., 7 pm, Nov and Dec.	Ron Krug 928-284-9357 928-477-3020
Yavapai	Pueblo of the Smoki Museum 147 North Arizona St., Prescott	3 rd Thurs., 7 pm Sept. thru Nov. Jan. thru June.	Sue Ford 928-778-5795



Arizona Archaeological Society
 Box 9665
 Phoenix, Arizona 85068

NONPROFIT ORG.
 US POSTAGE PAID
 PHOENIX AZ
 Permit No. 645



Dated material:
 Please deliver promptly.
 Thank you!

STATE OFFICERS

<i>Glenda Simmons, Chair</i> PO Box 780 Wickenburg, AZ 85358 928-684-3251 Fax 928-684-3259 president@azarchsoc.org	<i>Trudy Mertens, Treasurer</i> P.O. Box 819 Wickenburg, AZ 85358 928-684-0077 treasurer@azarchsoc.org
<i>Sandy Haddock, 1st Vice Chair</i> 6901 East Windsor Avenue Scottsdale, AZ 85257 480-481-0582 azmacaw44@cox.net	<i>Ron Krug, Secretary</i> PO Box 20969 Sedona, AZ 86341 (928) 284-9357 or 477-3020 secretary@azarchsoc.org
<i>Fred Kraps, 2nd Vice Chair</i> 739 Douglas Ave. Prescott, AZ 86301 928-273-8877 fkraps@mac.com	<i>Sylvia Lesko, Membership</i> 865 S. Oak Street Gilbert, AZ 85233 480-497-4229 membership@azarchsoc.org

Alan Troxel
 Archivist, Historian and Collections
 archivist@azarchsoc.org

CERTIFICATION DEPARTMENT

Chuck Jenkins, Chair
 15 Amberly Drive
 Sedona, AZ 86336
 certification@azarchsoc.org

Trudy Mertens, Treasurer
 P.O. Box 819
 Wickenburg, AZ 85358
 928-684-0077
 shardguard@interwrx.com

Allen Dart, Advisor
 520-798-1201
 adart@OldPueblo.org

OBJECTIVES OF AAS:

- To foster interest and research in the archaeology of Arizona
- To encourage better public understanding and concern for archaeological and cultural resources
- To protect antiquities by discouraging exploitation of archaeological resources
- To aid in the conservation and preservation of scientific and archaeological data and associated sites
- To serve as a bond between the professionals and the avocational non-professionals
- To increase knowledge and improve the skill of members in the disciplines of archaeology
- To participate in investigations in the field of archaeology and to put the information so obtained into published form
- To publish a journal and such monographs as the publications committee deems appropriate

PUBLICATIONS

<i>Ellie Large, Publications Chair and Petroglyph Editor,</i> publication@azarchsoc.org	<i>Alan Ferg, Arizona Archaeologist Series Editor</i> Ferg@email.arizona.edu
<i>Linda Dorsey, Webmaster</i> webmaster@azarchsoc.org	<i>Ken Zoll, Arizona Archaeologist Series Production Editor</i> zollken88@gmail.com

LEGISLATIVE LIAISON

Kevin J. Palmer
 480-515-2211
 kjp@smainstitute.com

ADVISORS

<i>Joan Clark</i>	<i>Alan Ferg</i>
<i>John Hohmann, Ph.D.</i>	<i>Gary Stumpf</i>